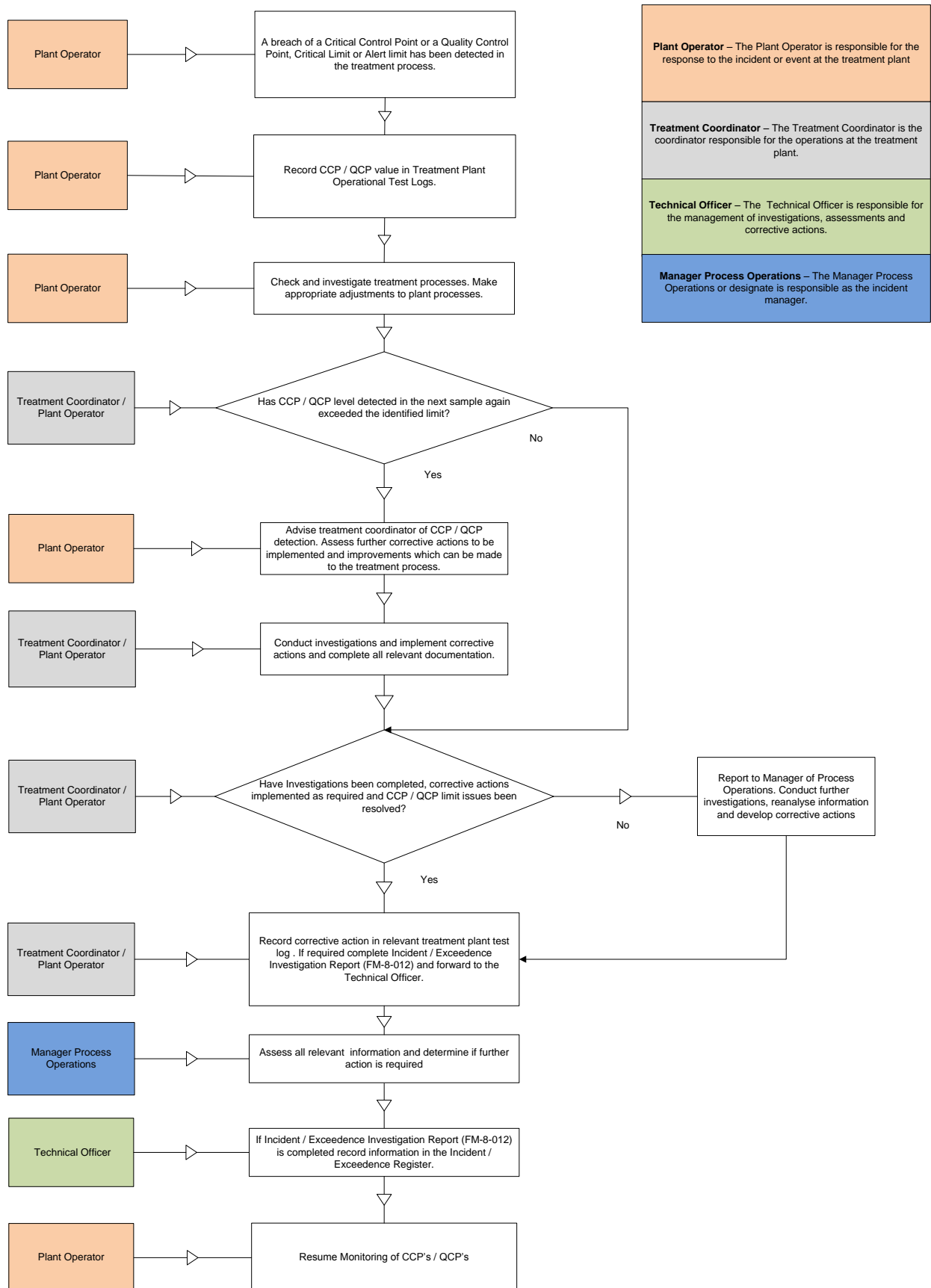


Detection of an Critical Control Point / Quality Control Point Above Limit Procedure



Exceedance Manager, Response Protocol, Reporting and Emergency Contacts

Manager Water & Wastewater Process Operations shall be responsible for response protocols, level of escalation and reporting. This will be based on Incident Investigations, Hazard Identification, Risk Assessment and Corrective Actions to be implemented.

Emergency Contact – Manager Water & Wastewater Process Operations

Emergency Numbers – (Out of Hours) – 0429 348 860 / **Local Number** – (Business Hours) (07) 4130 4812