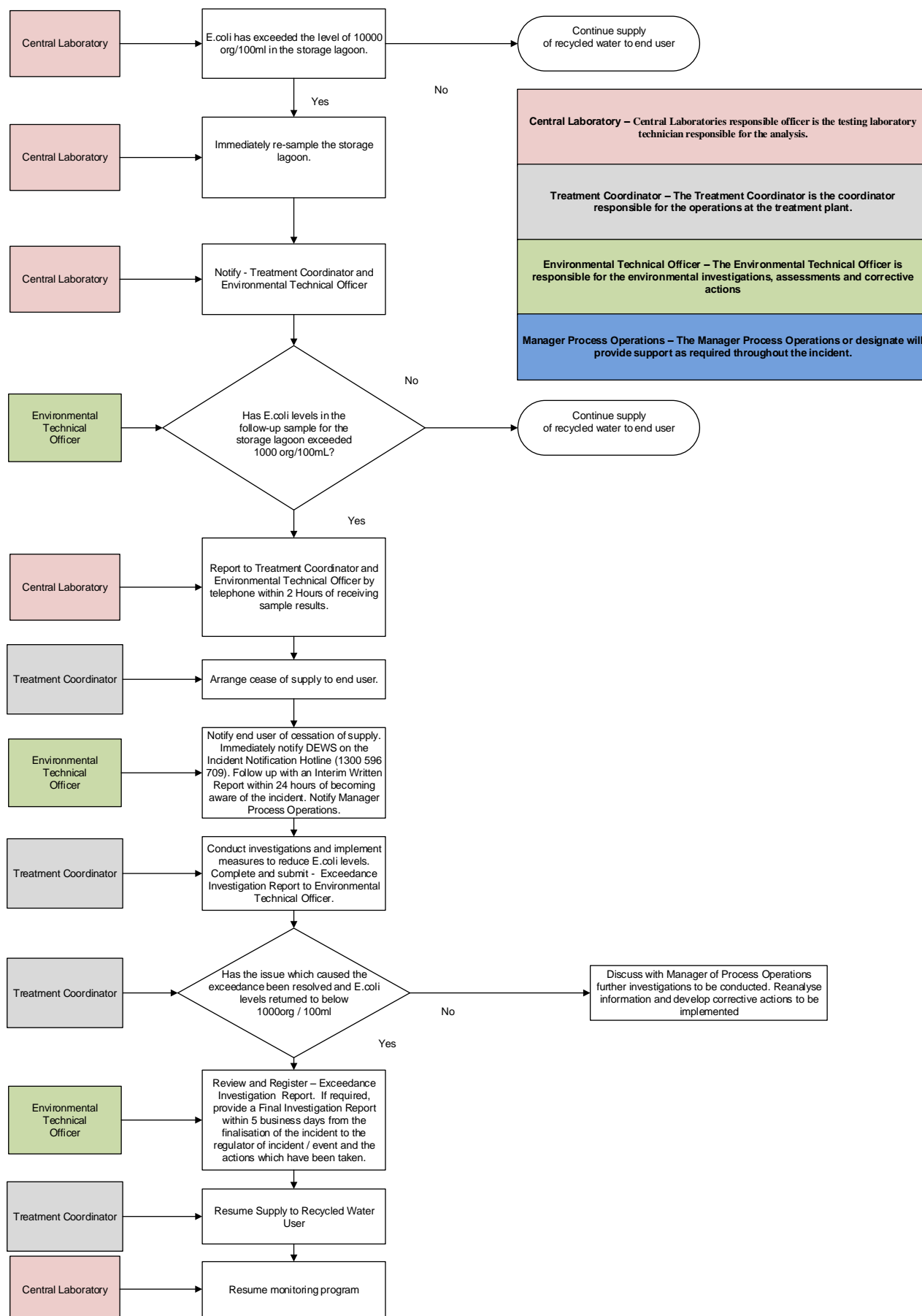


## ESCHERICHIA COLI CONTROL TRIGGER LEVELS FOR THABEBAN WWTP RECYCLED WATER SCHEME



### Incident Manager, Response Protocol, Reporting and Emergency Contacts

The Manager of Water and Wastewater Process Operations shall be responsible for response protocols, level of escalation and reporting. This will be based on Incident Investigations, Hazard Identification, Risk Assessment and Corrective Actions to be implemented.

Site Specific Response - **Business Hours** – Relevant Section Coordinator / **After Hours** – On-call Supervisor - 0428 737 350